



Mechtrac

MechTrac 1730/2100/2500/3000



Dual drive, 4 wheels

- Inside of rails.
 - 1730 mm
 - 2100 mm
 - 2500 mm
 - 3000 mm
- Adapted to the standard rail widths for column and booms.



MechTrac 1730/2100/2500/3000



MechTrac 1730 with 2 x A2S Mini Master SAW Heads

MechTrac



- Technical data:
- Dual drive, 4 wheels
- Prepared for A2 S with manual or motorized slides (one or two)
- Max height under the boom is 1500 mm and the width between the rails are 1730, 2100, 2500 or 3000 mm
- Max load: two sets of A2 welding head single, 30 kg spools or Twin-arc with 2x15 kg spools for each head (max 220 kg)
- Travel speed 20-190 cm/min

Hat Beams – 2 x Mechtrac x1 rail, Mig/Mag&SAW



Hat Beams — 2 x Mechtrac x1 rail, Mig/Mag&SAW



Trailer Beams – Mechtrac SAW



I Beams – Mechtrac SAW



Beam welding ESAB MechTrac



Beam welding ESAB MechTrac



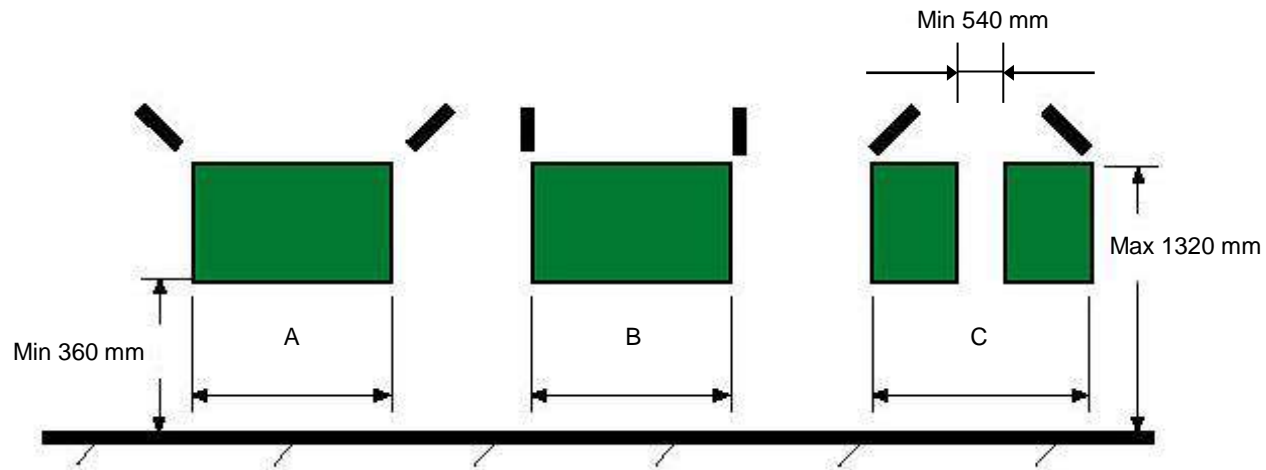
Beam welding ESAB MechTrac



Beam welding ESAB MechTrac



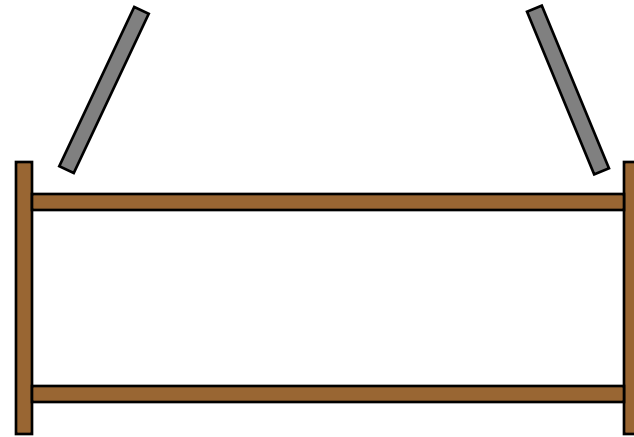
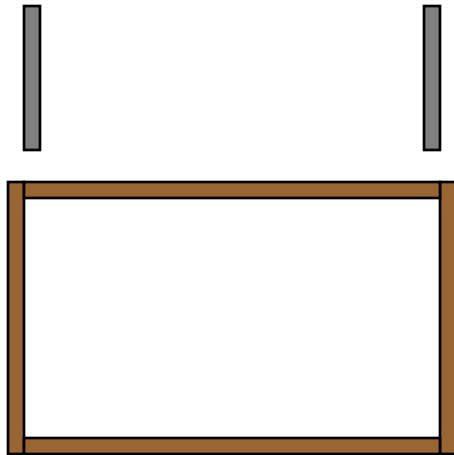
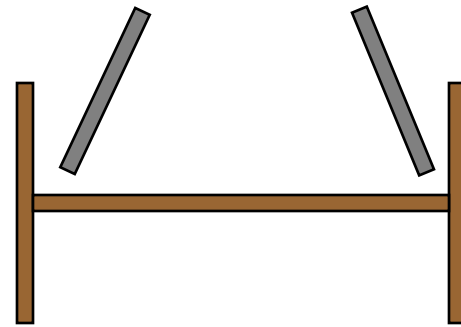
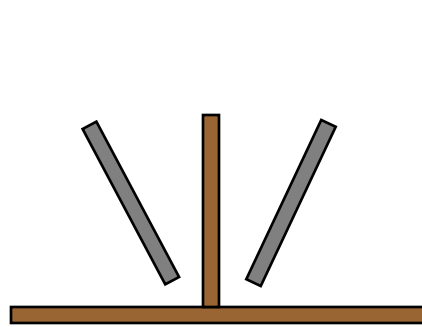
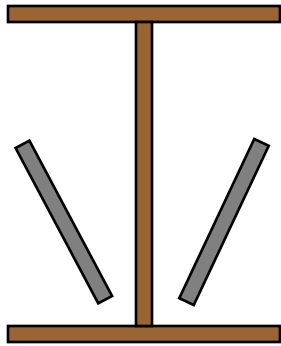
MechTrac



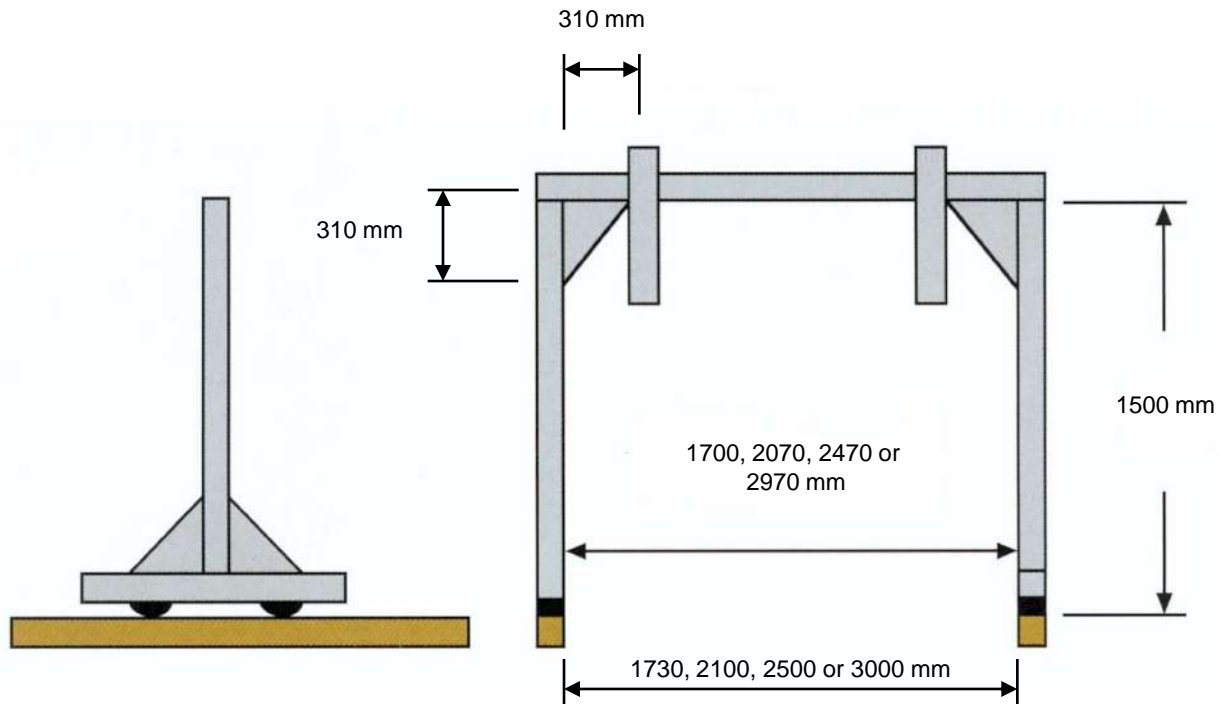
Working range MechTrac	A	B	C
	Max	Max	Max
MechTrac 1730	630	1010	1390
MechTrac 2100	1000	1380	1760
MechTrac 2500	1400	1780	2160
MechTrac 3000	1900	2280	2660

MechTrac

(I, H or box beam)



MechTrac

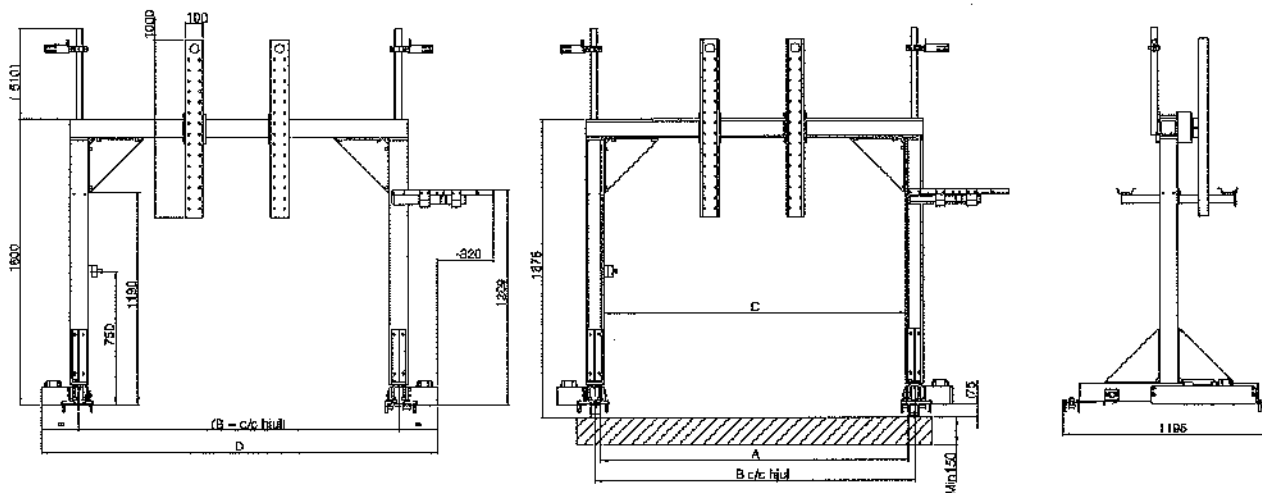


MechTrac

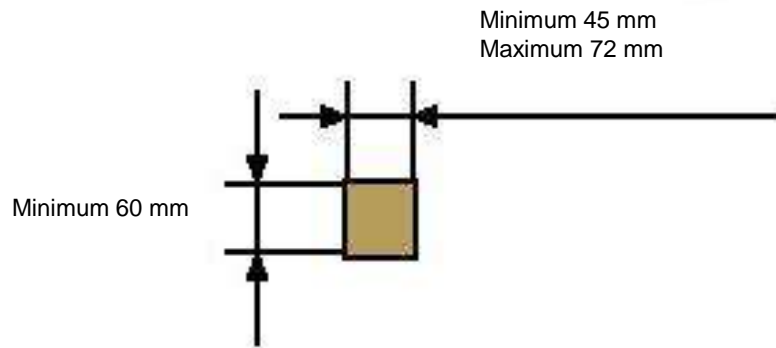
**Måttskiss Målskitse Målskisse Mittapiirustus Dimension drawing Mass-
 bild Cotes d'encombrement Maatschets Croquis acotado Dimensiōni
 Esboço com dimensões Σχεδιάγραμμα μεγεθών**

Double version

Group	A	B	C	D
881	1730	1800	1700	2227
882	2100	2170	2070	2597
883	2500	2570	2470	2997
884	3000	3070	2970	3497



MechTrac



Travelling rail, 3 m (=1.8 m welding length)

Rail, 3 m to extend the travelling rail

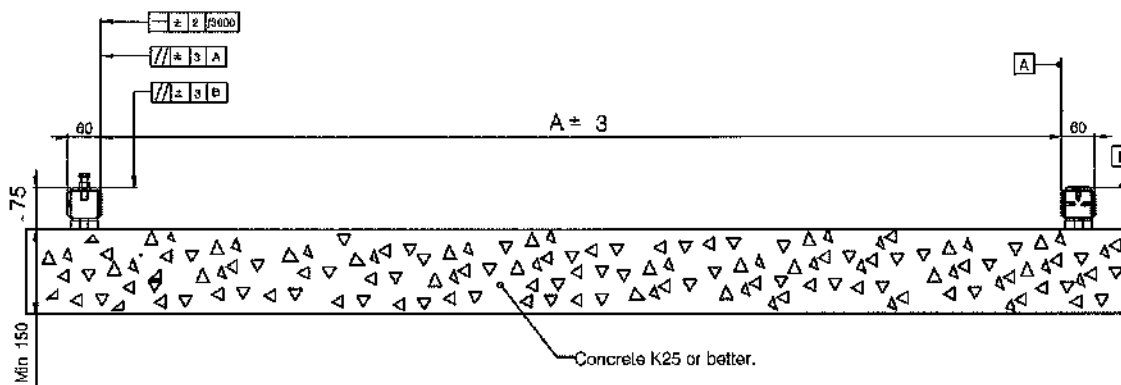
MechTrac

Rail foundation

The rail is bolted with M12 bolts.

Use metal sheets of different thickness to adjust the rail according to dimensions.

A
1730
2100
2500
3000



Standard Automation



LAF / TAF power sources and new PEK controller



DC – Power Sources



AC – Power Sources



LAF 631 / 1001 / 1251 / 1601

TAF 801 / 1251

A2-A6 PEK Process controller

New controller for welding automation

- To be used with the new versions of SAW power sources:
LAF 631 / 1001 / 1251 / 1601 and TAF 801 / 1251
- Communicate with peripheral equipment such as PLC using the industrial CAN-bus standard
- Uses encoder for motor control - better precision and less disturbance



GMH Joint tracking unit



C&B

A2/A6 T or S



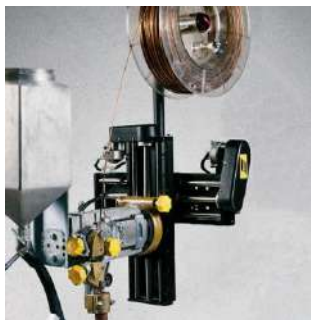
Applied automation
The new joint tracking unit

PAV Control unit



C&B

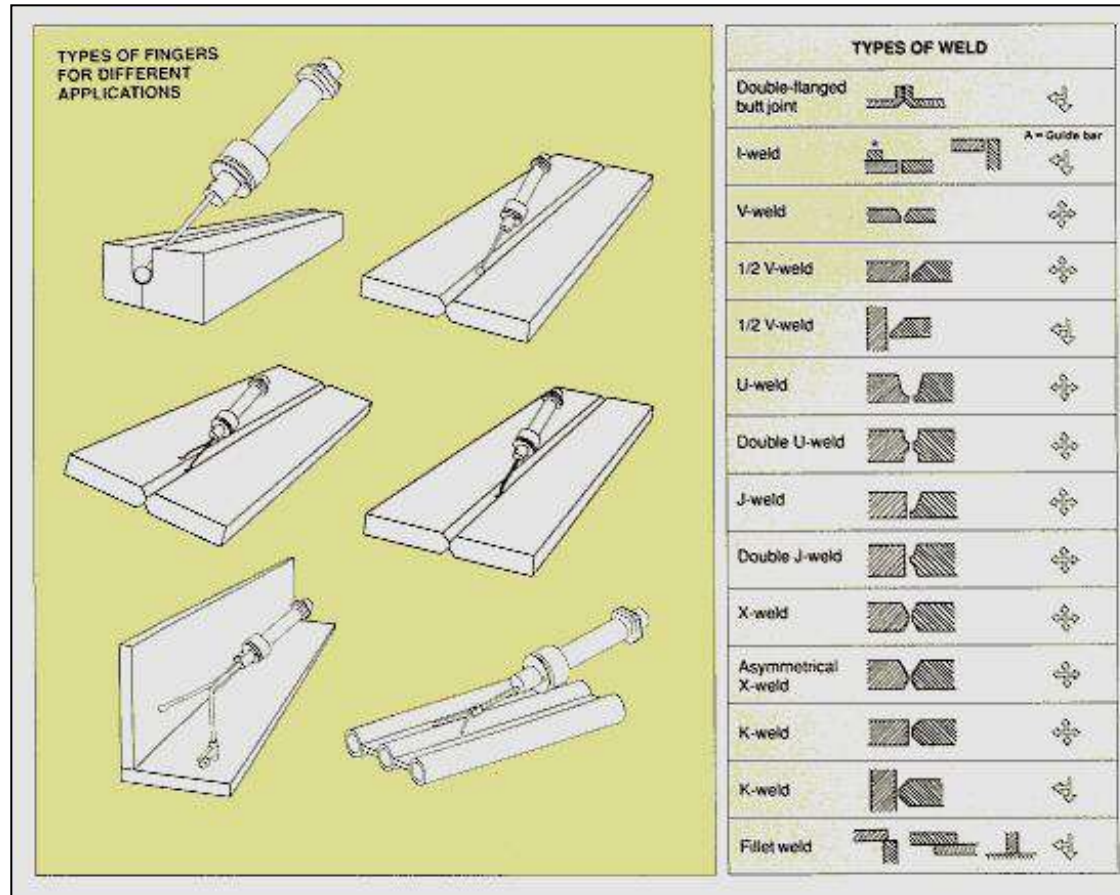
A2/A6 T or S



Applied automation

The new control unit PAV

Automatic Joint tracking system



LAF DC Power Sources

LAF 631,1001,1251 and 1601

- Used in conjunction with A2-A6 PEK or A2 PEI
- Three phase, fan cooled DC power sources
- Designed for high productivity mechanized SAW or MIG welding
- Excellent welding characteristics throughout the entire current and voltage range, with particularly good starting and re-ignition properties
- Extremely efficient power usage
- Extend current range by connecting two power sources in Parallel
- One PCB for all LAF power sources

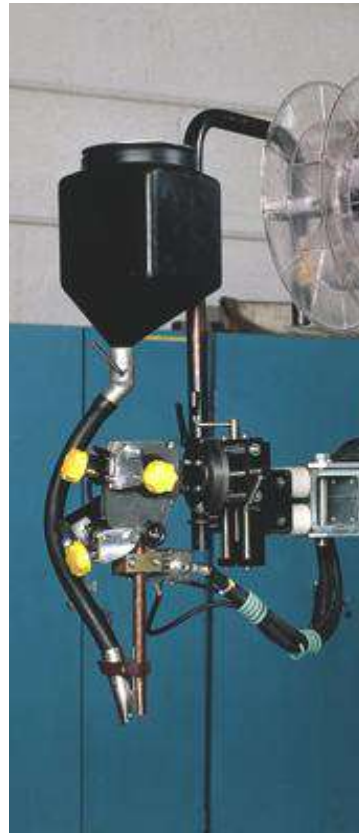


Flux Recovery System



OPC flux recovery system

A2S Welding Head for SAW

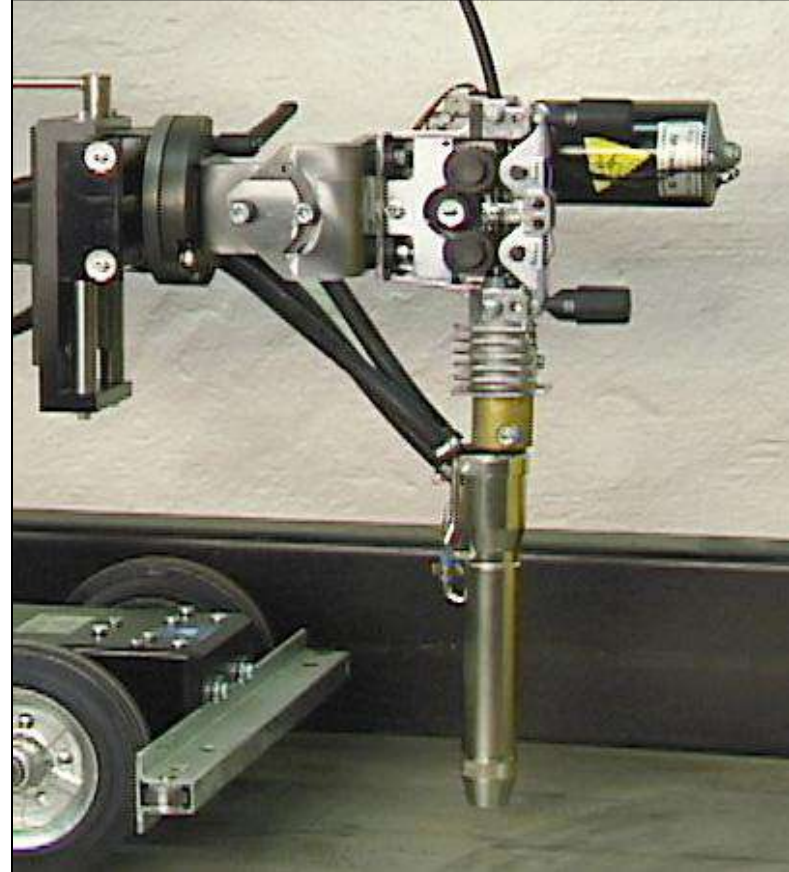


A2S Mini Master

A2G Welding Heads for MIG

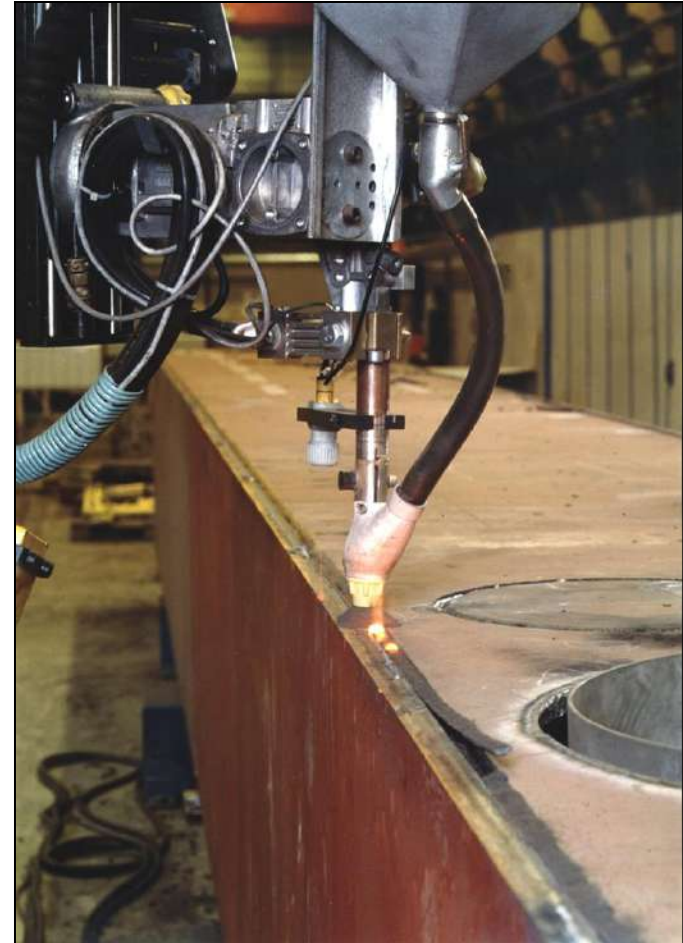


A2G Mini Master 2WD



A2G MTW 600/1000 4WD

A6S Twin arc System



A6S W/Twin Arc Kit

Thank you