

FR / Leather Welding Jacket

FR Clothing Range





Combining the best attributes of split leather and flame-resistant cotton, the ESAB FR/leather welding jacket gives fantastic protection from welding spatter in a comfortable, lighter weight jacket than a full leather option. This combination jacket includes three generous internal pockets to hold all essentials without the possibility of catching hot materials. A full-length hook-and-loop front fastening system with standing collar seals out hot material while still being quick and easy to remove.

Designed for comfort as well as protection, generous sleeves with adjustable cuffs facilitate a good fit. Under-arm gussets also help when welding overhead, helping to ensure that the sleeve always covers the entire arm.

- Premium split leather shoulders and arms
- Full torso 100% FR cotton denim
- Kevlar® stitching
- FR cotton standing collar
- Internal pockets and under-arm gussets
- Double bar tacking

Visit esab.com for more information.

FR / Leather Welding Jacket

Specifications		
Operating Temperature	-10 to +40 °C (+14 to +104 °F)	
Weight	1.5 kg (3.3 lbs)	
Country Of Origin	India	
Certifications	 	CE, EN ISO 11611:2015, Class 2A1; UKCA 2019 S1696 Schedule 35 Reg. 38

Approvals – EN ISO 11611:2015, Class 2A1

Intended Use:

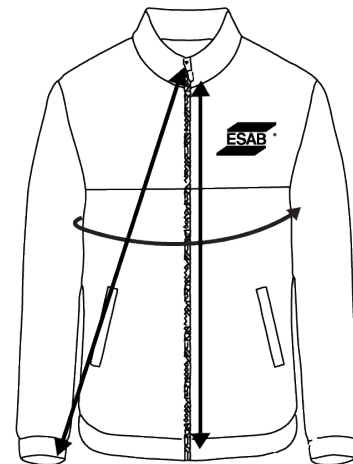
Class 2- recommended for manual welding techniques with heavy formation of spatters and drops e.g MMA welding (with basic or cellulose-covered electrode), MAG welding (CO2 or mixed gases), MIG welding (with high current), self-shielded flux cored arc welding, plasma cutting, gouging, oxygen cutting, thermal spraying for operation of machines e.g. in confined spaces, at overhead welding / cutting or in constrained positions. This clothing is intended to protect against flames, molten metal, spatter, radiant heat and short term, accidental electrical contact.

Ordering Information

FR / Leather Welding Jacket, S	0700500493
FR / Leather Welding Jacket, M	0700500494
FR / Leather Welding Jacket, L	0700500495
FR / Leather Welding Jacket, XL	0700500496
FR / Leather Welding Jacket, 2XL	0700500497
FR / Leather Welding Jacket, 3XL	0700500498
FR / Leather Welding Jacket, 4XL	0700500499

Sizing

Size	Chest circumference (cm)	Sleeve Length (cm)	Torso Length (cm)
S	112	81	76
M	117	84	76
L	122	86	76
XL	127	88	76
2XL	132	89	76
3XL	137	90	76
4XL	142	91	76



ESAB / esab.com



FR / Leather Welding Trousers

FR Clothing Range



FR denim combines with split grain leather to provide comfortable, durable and effective welding trousers. These trousers meet Class 2 protection which inspires confidence of the ultimate protection even in the most demanding situations.

The leather front is layered on top of 100% cotton FR denim to allow for advanced protection without sacrificing comfort. Using a traditional 4-pocket design, the front pockets are protected by a full hook-and-loop closure, while the rear pockets are protected by a snap-over closure to prevent hot material intrusion. A protected button fly completes the fit, allowing for maximum comfort. Adding to the convenience, there is a tool pocket along the right thigh.

- Reinforced front made of durable grade-A split leather to withstand the exposure to welding spatter
- Meets EN ISO 11611:2015, Class 2A1 standards
- Top and bottom are made from flame-retardant 100% cotton denim.
- Reinforced Kevlar® stitching

Visit [esab.com](https://www.esab.com) for more information.

FR / Leather Welding Trousers

Specifications		
Operating Temperature		-10 to +40 °C (+14 to +104 °F)
Weight		1.2 kg (2.65 lbs)
Country Of Origin		India
Certifications	CE UK CA	CE, EN ISO 11611:2015, Class 2A1; UKCA 2019 S1696 Schedule 35 Reg. 38

Approvals – EN ISO 11611:2015, Class 2A1



Intended Use:

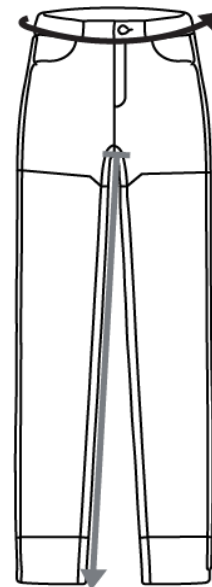
Class 2- recommended for manual welding techniques with heavy formation of spatters and drops e.g MMA welding (with basic or cellulose-covered electrode), MAG welding (CO2 or mixed gases), MIG welding (with high current), self-shielded flux cored arc welding, plasma cutting, gouging, oxygen cutting, thermal spraying for operation of machines e.g. in confined spaces, at overhead welding / cutting or in constrained positions. This clothing is intended to protect against flames, molten metal, spatter, radiant heat and short term, accidental electrical contact.

Ordering Information

FR/Leather Trousers S	0700500564
FR/Leather Trousers M	0700500565
FR/Leather Trousers L	0700500566
FR/Leather Trousers XL	0700500567
FR/Leather Trousers XXL	0700500568
FR/Leather Trousers 3XL	0700500569
FR/Leather Trousers 4XL	0700500570

Sizing

Size	Waist (cm)	Inseam (cm)
S	81	81
M	86	81
L	91	81
XL	97	81
XXL	102	81
3XL	107	81
4XL	112	81



ESAB / esab.com



CarryVac 3

Portable fume extractor



CarryVac 3 is a small, lightweight and portable fume extraction unit used to maintain a healthy work environment by extracting fumes directly at the source in light duty welding applications.

Designed to be carried to the working area, it can be connected to either a fume extraction welding torch or to the extraction nozzle to extract fumes.

Weld fumes are filtered and captured in a hygienically-packed filter that offers complete protection from particles keeping them isolated from welders even when performing a filter change.

Welding Process

- Welding, GMAW (MIG/MAG)
- Welding, GTAW (TIG)
- Welding, PAW -Plasma Arc Welding
- Welding, SMAW/MMA (Stick)

- Nanofiber filter with extended dust holding capacity and 99% efficiency in capturing welding fumes, ensuring compliance with the W3 standard
- Manual and automatic start/stop function which increases the service life of each filter and of the unit itself
- Adjustable flow to adapt to different torches and hoods
- Automatic flow adjustment to maintain correct airflow and suction during operations
- Alarm notifications
- ISO 21904 compatible for industry standards compliance
- Suitable for fume extraction for light welding applications

Visit esab.com for more information.



TM-200

PM-300

TM-80

Suction Nozzles

CarryVac 3

Specifications	
Primary Voltage	110/230 VAC \pm 15% , 1ph, 50/60 Hz
Power	1250 W (110-120V) 1300 W (220-240V)
Filter Surface	5.3 m ² (17.4 ft ²)
Noise Level (at 1m/3ft, 100% motor power, ISO 11201)	79 dB(A)
Operating Temperature	0 to +35 °C (+32 to +95 °F)
Storage Temperature	-20 to +60 °C (-4 to +140 °F)
Extraction Capacity	180 m ³ /h (106 cfm)
Extraction Capacity, 5 m Hose	165 m ³ /h (97 cfm)
Filter Efficiency	>99 %
Standards (Filter)	(ISO 21904-2) F9 (EN779) MERV 14 (ASHRAE 52.2)
Standards (Unit)	EN ISO 21904-1:2020, EN ISO 12100:2010, EN ISO 20607:2019 EN 61000-6-2:2019, EN 61000-6-4:2019 EN 61000-3-3:2013, EN 60204-1:2018
Max. Vacuum (generated by the motor)	25 kPa
Max. Vacuum (at hose connection)	18 kPa
Hose Diameter	50 mm (2 in.)
Dimensions L x W x H	800 x 222 x 406 mm (31 x 8.7 x 15.9 in.)
Weight	14.8 kg (32.6 lbs)

Ordering Information	
Description	Part Number
CarryVac 3 AST, 230V, EU	0700003890
CarryVac 3 AST, 110V, UK	0700003891
CarryVac 3 AST, 110V, US	0700003892
CarryVac 3 AST, 230V, EU Hose Connection	0700003893

Delivery includes: Fume extraction unit complete with hose superflex crushproof \varnothing 50 2.5 m (8 ft), 2x hose connection M50 \varnothing 50mm, sensor clamp, filter and instruction manual.

Wears & Spares		
No	Description	Part Number
1	Filter nano disposable	0700003903
2	Motor 1250W 110V	0700003904
3	Motor 1300W 230V	0700003905
4	Sensor clamp	0700003091
5	Kit motor gaskets	0700003906
6	Control unit	0700003907
7	Hose superflex crushproof \varnothing 50mm 2.5 m (8 ft)	0700003908
8	Hose connection M50 \varnothing 50mm	0700003909
9	Pre-separator	0700003910
10	Motor cover w.overlay	0700003911

CarryVac 3

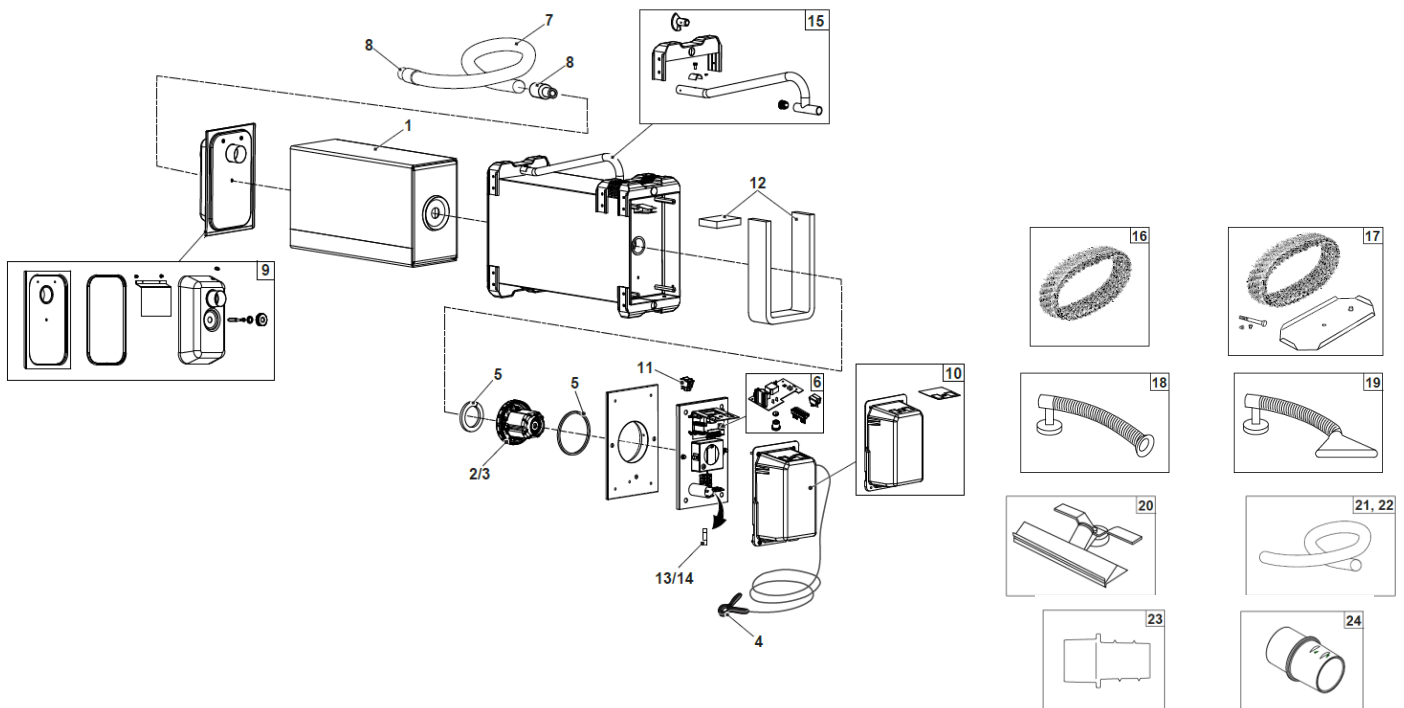
Wears & Spares, cont.

No	Description	Part Number
11	Switch 3-pos.	0464663106
12	Kit sound sealing	0700003912
13	Fuse 5x20mm 6,3AT (10 pieces)	0700003913
14	Fuse 5x20mm 12AT (10 pieces)	0700003914
15	Handle kit	0464663078

Options & Accessories

No	Description	Part Number
16	Spark arrestor	0700003014
17	Spark arrestor kit*	0468455002
18	Suction nozzle TM-80, 80 mm round	0700003221
19	Suction nozzle TM-200, 200 mm wide	0700003222
20	Suction nozzle PM-300, 300 mm wide	0700003223
21	Hose superflex crushproof Ø50 5 m	0700003917
22	Hose superflex crushproof Ø50 15 m	0700003918
23	Fume torch adaptor	0464663043

* complete



ESAB / esab.com

